



RECP #: 752707

RECORDED 5/8/2019 AT 1:13 PM BK# 2620 PG# 1749
Debra K. Lee, CLERK OF LARAMIE COUNTY, WY PAGE 1 OF 1

STATE OF WYOMING CORNER RECORD

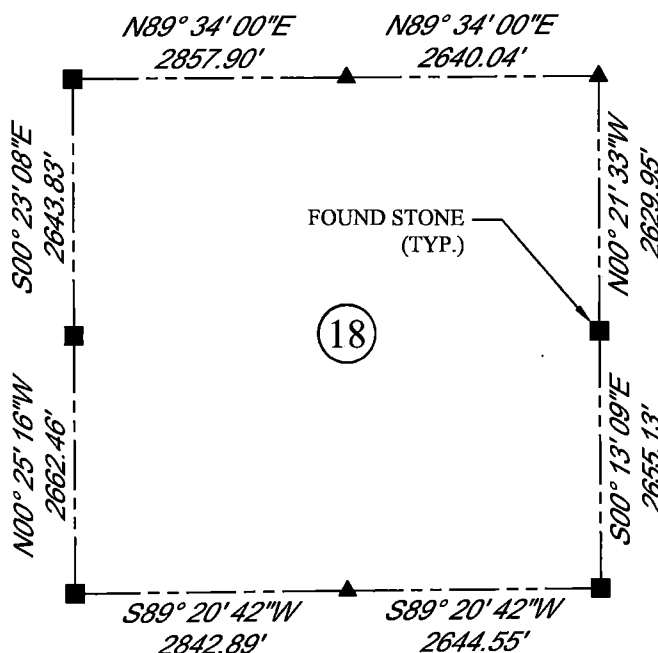
(In compliance with the CORNER PERPETUATION AND FILING ACT, Wyoming Statutes, 1997 Section 33-29-140, et. seq., and the Rules and Regulations of the Board of Registrations for Professional Engineers and Professional Land Surveyors)

EAST QUARTER CORNER SECTION 18, T. 18 N., R. 61 W., 6TH P.M., LARAMIE COUNTY, WYOMING

GLO: A SANDSTONE 16X8X5 SET 12" DEEP, MARKED 1/4" WEST SIDE FOR 1/4 SEC CORNER.
FOUND: A FIRM SET STONE APPROXIMATELY 13X11X8. NO EVIDENT MARKINGS.
SET: SET ACCESSORY CAP AS SHOWN ON SOUTH SIDE OF STONE. CAP IS APPROXIMATELY 5" ABOVE SURFACE.



SCALE: NONE
NORTH DETERMINED BY
G.P.S OBSERVATIONS



LEGEND:

- FOUND BLM CAP
- FOUND USFS CAP
- FOUND STONE
- ◻ FOUND PRIVATE MONUMENT
- ◊ CALCULATED POSITION
- ▲ SET MONUMENT (LS10245)
- SECTION LINE

DATE OF FIELD WORK: 10/05/2018 OFFICE REFERENCE: MERIDEN

CROSS INDEX DIAGRAM

	1	2	3	4	5	6	7	8	9	10	11	12	13	14	15	16	17	18	19	20	21	22	23	24	25
A																									
B																									
C				6		5			4		3			2		1									
D																									
E																									
F																									
G				7		8			9		10			11		12									
H																									
J																									
K																									
L				18		17			16		15			14		13									
M																									
N																									
O																									
P				19		20			21		22			23		24									
Q																									
R																									
S																									
T				30		29			28		27			26		25									
U																									
V																									
W																									
X				31		32			33		34			35		36									
Y																									
Z																									
	1	2	3	4	5	6	7	8	9	10	11	12	13	14	15	16	17	18	19	20	21	22	23	24	25

WOOD
2615 AVIATION DRIVE
SHERIDAN, WY 82801
PH: 307-675-6400

THIS CORNER RECORD WAS
PREPARED BY ME OR UNDER
MY DIRECTION AND
SUPERVISION,
SEAL AND SIGNATURE

